

eD-QDRIVE 1



100%

ELECTRIC

The eD-QDrive 1 operates fully electric. The eD-QDrive operates seamlessly and quiet with the absence of CO2 emissions.

250NM

TORQUE AT 2000 RPM

Feel the electric POWER! 250 Newton-meters of torque at 2000RPM. Feel acceleration in its purest form.

270HP

PEAK POWER

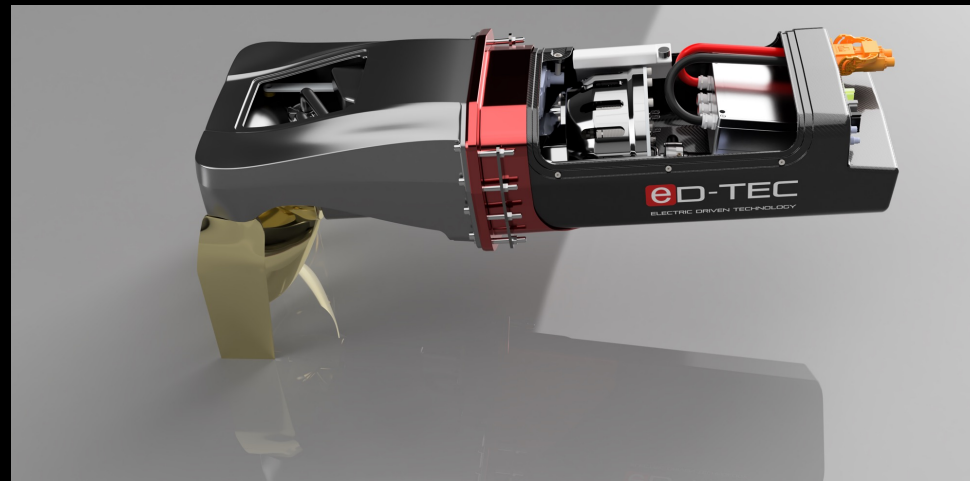
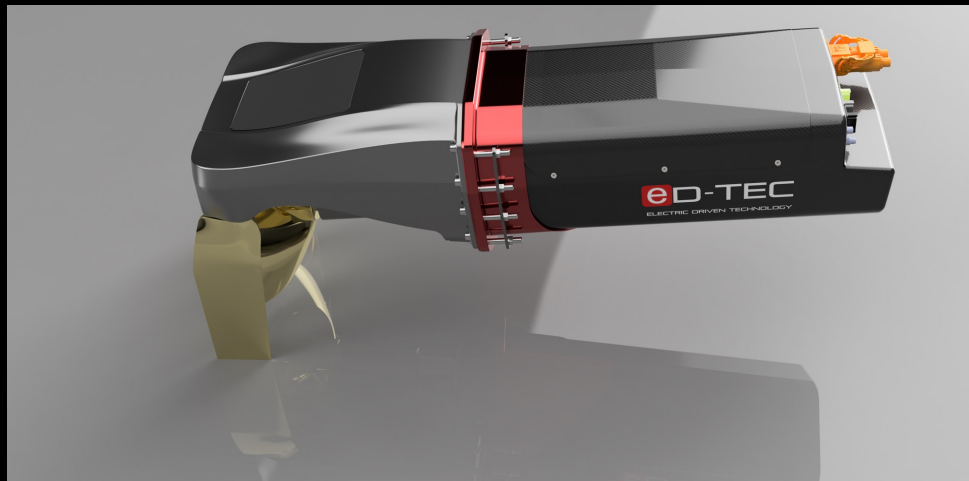
*The eD-QDrive offers a boost function for a limited time period reaching 200kW (270HP) per drive. This Offering dramatic acceleration, unlike anything else.

135HP

CONTINUOUS POWER

The eD-QDrive is can allow up to 100kW continuous power. Through the integrated gearbox, the Motor operates in its most efficient power setting.

Disclaimer: everything presented are subject to change and thus preliminary



THE ED-QDRIVE 1 - A FULLY INTEGRATED POWER HOUSE

The eD-QDrive 1, is a fully integrated electric power unit developed for vessels 6-10 Meter. The eD-QDrive 1 seamlessly integrated into the eD-TEC modular platform producing up to 800 kW with 4 units. The power unit is equipped with a surface piercing propulsion system. Offering fascinating performance and efficiency.

The eD-QDrive 1 is developed primarily as a twin engine system, the minimal aerial footprint of the Drive enables the installation of twin drives even on the smallest transom. The eD-QDrive's body and twin flanking rudders offer best protection to crew, passengers and vessel from the aggressive propellers. So safer for swimmers. Unlike other drives there is no need for ventilation grills in platforms or excess open space over the drive, so a closed swim platform even can be used to provide extra protection and more quiet operation too.

The eD-QDrive Advantage:

- 100% Electric
- Fully Integrated & Seamless in the eD-TEC Platform
- Light weight composite construction
- Higher speed –up to 30% more than fixed propeller
- Use less fuel – proportional to speed increase
- Fast acceleration and easy transition
- Exceptional maneuverability
- Excellent tracking at all speeds
- Lowest and easiest maintenance
- Compact design and easy installation

GETTING STARTED

FROM THE ORIGIN

Know Your Demands

A perfect system is not ideal for everyone. Every customer or shipyard has different expectations from a vessel, and every hull has various demands or limitations that must be considered when identifying your system.

IDENTIFYING YOUR SYSTEM

eD-QDrive 1

Knowing your demands makes this step very easy. Based on vessel size, weight, and hull type, eD-TEC, can suggest and provide the power system that lives up to the customer's expectation. eD-TEC can offer the eD-QDrive 1 with 50kW up to 200kW and propeller sizes 16"-18".

RESOURCE DEMANDS

Adapt Your Resources

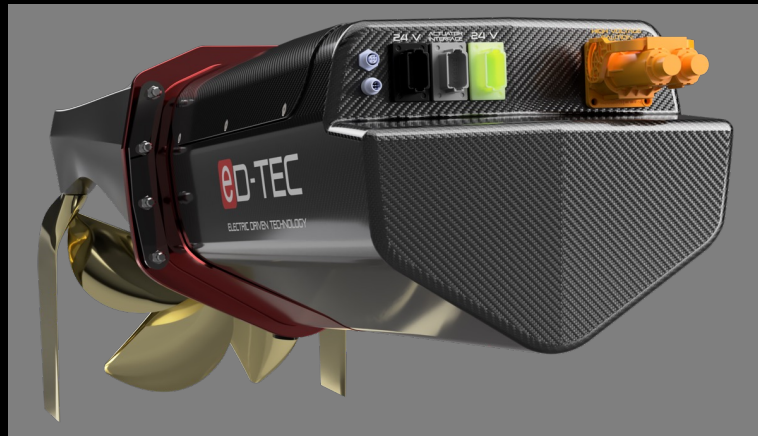
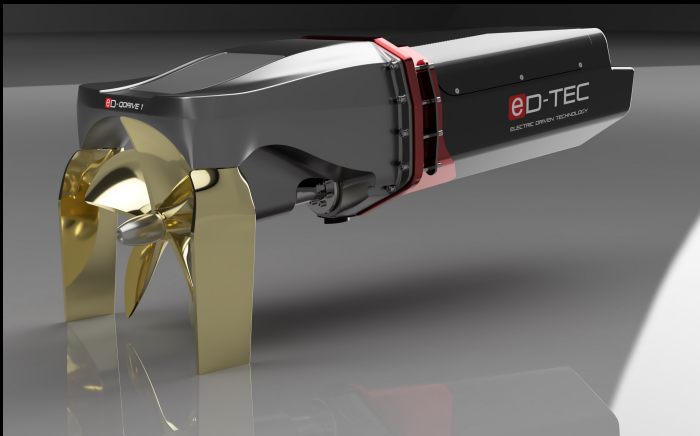
Do you expect your mission to be far and in demand for a lot of energy? No problem, eD-TEC's modular platform can be adapted to the vessels or operators' needs. Considering range demands as well as the effect on weight and balance, we can offer you the right package for your mission.

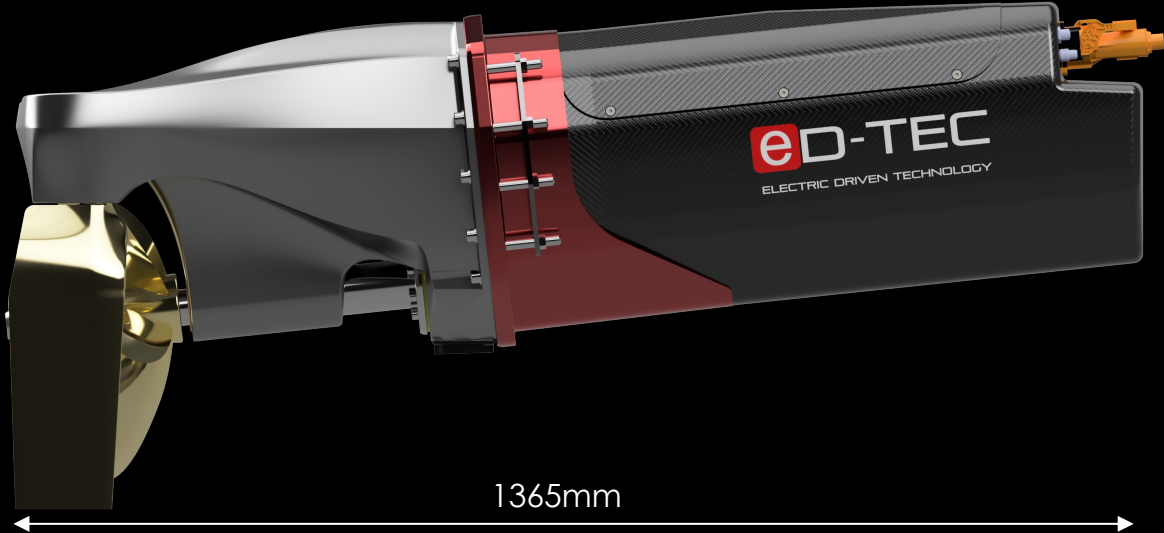
BECOME A BELIEVER

Order Your System!

Simply contact us, and we will be happy to talk to you about your vessel and your joint CO2-neutral missions and adventures.

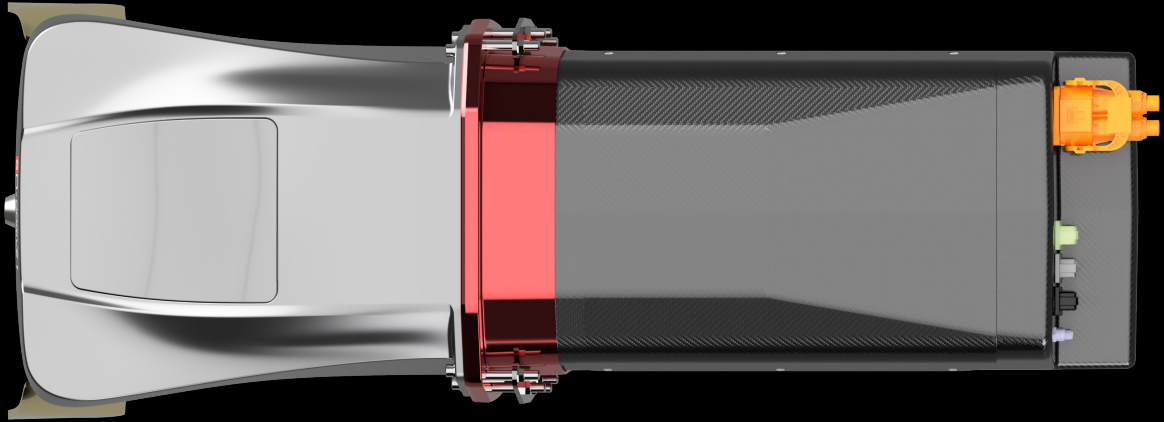
Contact our experts to get more info!





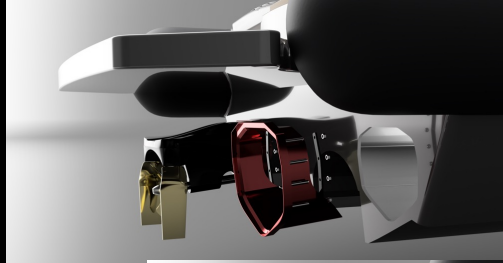
1365mm

860mm



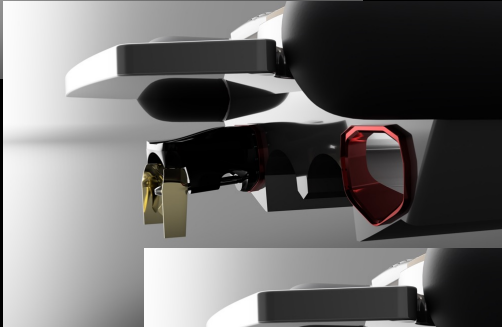
504mm

Electrical	Peak power	200kW
	Continuous power	100kW
	Voltage max.	750Vdc
	Voltage min.	500Vdc
	Low voltage supply	24Vdc
	Communication	CAN/J1939
Properties	Propeller size	16-18"
	Transom angle	6°
	Weight	<100kg
	Cooling	Dual circuit



TRANSOM PREPARATION

The vessel's transom is prepared according to the cutout template provided by eD-TEC. This cutout will enable the installation of the "Quick Mount Frame". No Further drillings will have to be made for the power unit. All cooling equipment and openings are located within the drive. This reduces the system's complexity and prevents unnecessary holes from being drilled into the hull.



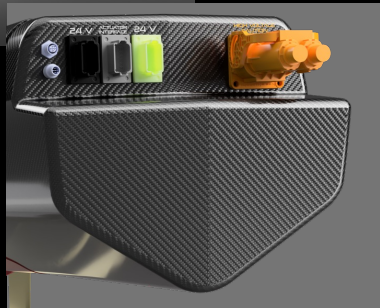
FIT THE QUICK MOUNT FRAME

After the transom has been prepared, the Quick Mount Frame can be fitted to the transom. This frame is bolted to the Hull using counter plates on the inside and sealed with silicone. Once this step is complete, the Hull is ready for marriage with the eD-QDrive.



FIXATE THE ED-QDRIVE

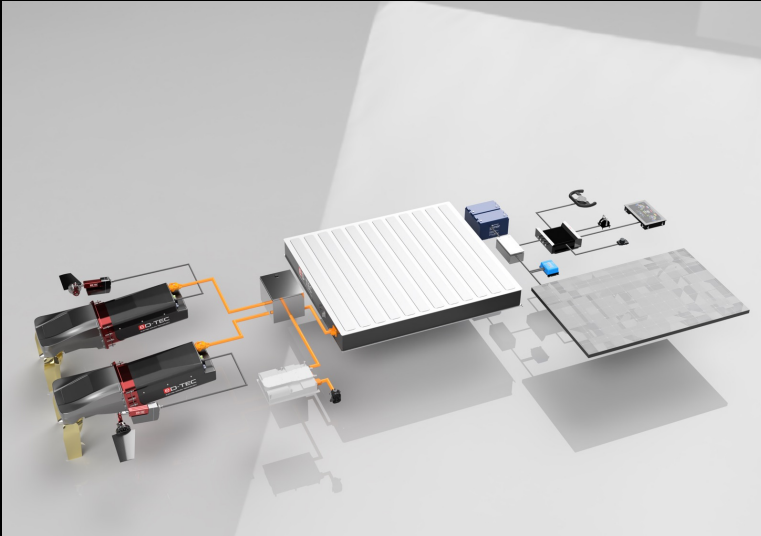
The Transom is now fully prepared. The eD-QDrive can be aligned with the Quick Mount Frame and pushed into the hull. Fixating the drive and a seal on the frame will prevent water from leaking into the hull. With this step, the mounting of the drive is complete. What is left is easy and quick!



PLUG&PLAY!

Now connected the eD-QDrive to the system cables. There is 1x High-Voltage Plug, 1x 24V In, 1x24V Out (Trim Tab/Foils), 2x CAN. Once the eD-QDrive is mounted and installed, the system can be booted up. The AI Box will automatically identify the drives and will integrate them accordingly.

100% INTEGRATION



Thanks to the 360 degrees technology stack of eD-TEC the drivetrain system is perfectly integrated into almost every boat seamlessly. The eD-TEC Technology Stack 360° covers the entire vessel's architecture ranging from propulsion to digital switching.

END-TO-END-ELECTRONICS



Thanks to the eD-TEC platform every system component is directly linked to the AI BOX, enabling update OTA into the last component. The vessel will be smarter and better every year! From the water to the cloud, interlinked, connected and smart!

DESIGNATED HMI



To fulfill the high standards eD-TEC holds itself to, it is necessary to develop a dedicated user interface to perfectly accommodate the functionalities offered by the system. The system ensures maximum efficiency, comfort, and performance while convenient usability.