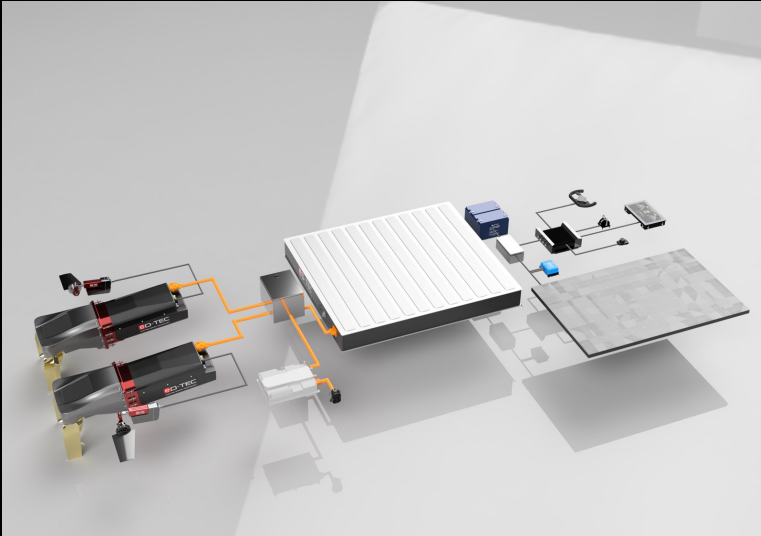


100% INTEGRATION



Thanks to the 360 degrees technology stack of eD-TEC the drivetrain system is perfectly integrated into almost every boat seamlessly. The eD-TEC Technology Stack 360° covers the entire vessel's architecture ranging from propulsion to digital switching.

END-TO-END-ELECTRONICS



Thanks to the eD-TEC platform every system component is directly linked to the AI BOX, enabling update OTA into the last component. The vessel will be smarter and better every year! From the water to the cloud, interlinked, connected and smart!

DESIGNATED HMI



To fulfill the high standards eD-TEC holds itself to, it is necessary to develop a dedicated user interface to perfectly accommodate the functionalities offered by the system. The system ensures maximum efficiency, comfort, and performance while convenient usability.

1. Best System

All operating windows are to be operated in the ideal operating range in the system network (fuselage, propeller and engine/gearbox).

2. Best Hull

A lightweight hull using carbon or nature fibre to gain structural integrity without compromising weight. Enhanced via foil or stepped hull technology.

3. Drive Train Platform

A simple plug & play solution is important for the boating industry for installation, operation and maintenance whilst catering to operators demands.

4. E3/AI/AD

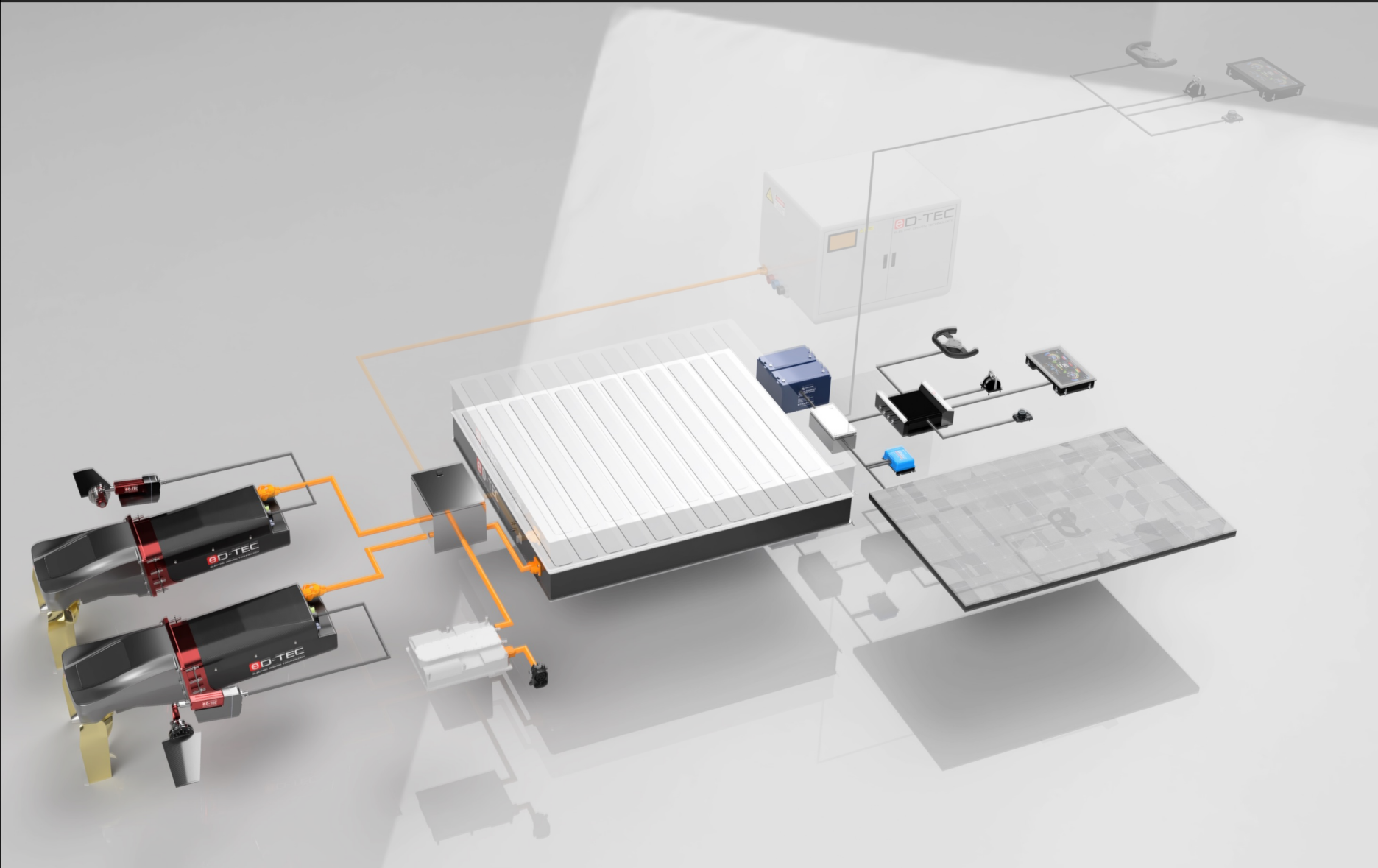
Perfect control, data and cloud-based ensures an optimal and secure system network and generates continuous updates and upgrades over the air.

5. SW Driven Platform

The cloud-based connectivity ensures updates over the air, assistant system Weden reloads, healthcare, docking, etc. are optimized year after year.

6. New Business Model

New business models revolving and driven by software updates and upgrades enables the subscriber constant development and improvement.

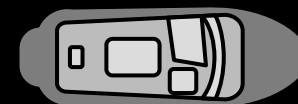


Scale it up!

From 6m monohull to 25m catamaran!
2 drive units up to 4 drive units, our technology stack scales with your needs! No matter if 100% electric or with a range extender, we can offer a system to YOUR needs.

6-10 meters

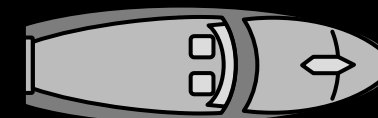
	Units	Performance	Propeller	Battery capacity	Range Extender	System performance
eD-Q1	2-4x	50-200 kW	16-18"	60-200 kWh	N/A	100-800 kW
eD-Q2	2x	100-400 kW	21-24"	160-360 kWh	20-200 kW	200-800 kW
eD-Q3	N/A	N/A	N/A	N/A	N/A	N/A



Coming soon

10-16 meters

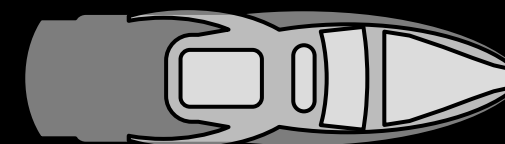
	Units	Performance	Propeller	Battery capacity	Range Extender	System performance
eD-Q1	2x	50-200 kW	16-18"	60-200 kWh	N/A	100-400 kW
eD-Q2	2-4x	100-400 kW	21-24"	160-360 kWh	20-200 kW	200-1600 kW
eD-Q3	2x	200-600 kW	25-32"	200-600 kWh	50-200 kW	400-1200 kW



Coming soon

16-25 meters

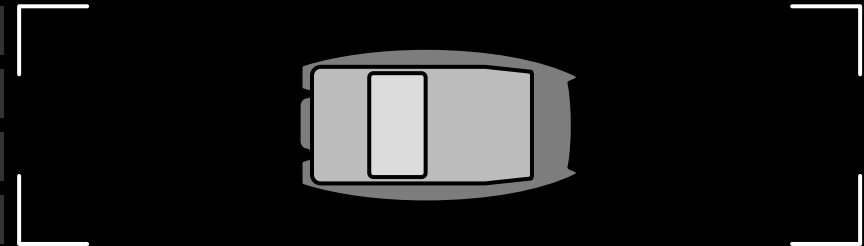
	Units	Performance	Propeller	Battery capacity	Range Extender	System performance
eD-Q1	N/A	N/A	N/A	N/A	N/A	N/A
eD-Q2	4x	100-400 kW	21-24"	160-360 kWh	20-200 kW	400-800 kW
eD-Q3	2-4x	200-600 kW	25-32"	200-600 kWh	50-200 kW	400-2400 kW



Coming soon

6-10 meters

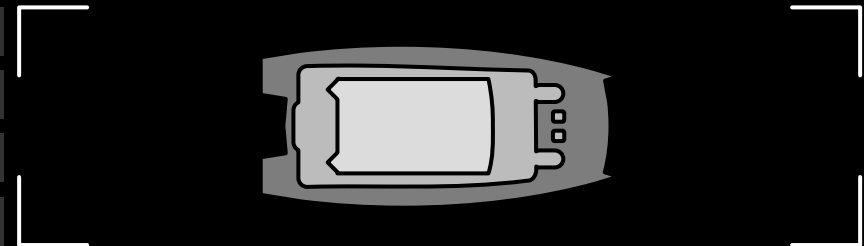
	Units	Performance	Propeller	Battery capacity	Range Extender	System performance
eD-Q1	2x	50-200 kW	16-18"	60-200 kWh	N/A	100-400 kW
eD-Q2	2x	100-400 kW	21-24"	160-360 kWh	20-200 kW	200-800 kW
eD-Q3	N/A	N/A	N/A	N/A	N/A	N/A



Coming soon

10-16 meters

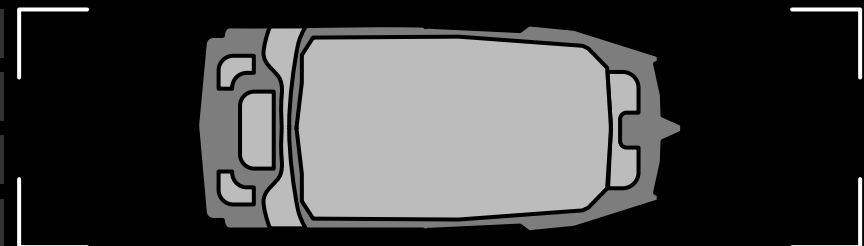
	Units	Performance	Propeller	Battery capacity	Range Extender	System performance
eD-Q1	2x	50-200 kW	16-18"	60-200 kWh	N/A	100-400 kW
eD-Q2	2x	100-400 kW	21-24"	160-360 kWh	20-200 kW	200-800 kW
eD-Q3	2x	200-600 kW	25-32"	200-600 kWh	50-200 kW	400-1600 kW



Coming soon

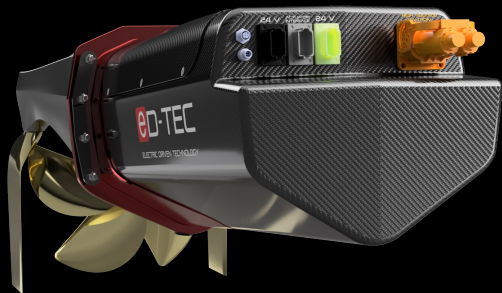
16-25 meters

	Units	Performance	Propeller	Battery capacity	Range Extender	System performance
eD-Q1	N/A	N/A	N/A	N/A	N/A	N/A
eD-Q2	2x	100-400 kW	21-24"	160-360 kWh	20-200 kW	200-800 kW
eD-Q3	2x	200-600 kW	25-32"	200-600 kWh	50-200 kW	400-1200 kW



Coming soon

50 - 2400 KW SYSTEM POWER



50 - 2400 kW System power

The eD-QDrive Series offers power units from 70kW to 600kW, which are 100% integrated. Motor, controller, cooling system (incl. water inlet, outlet, heat exchanger & water pumps), and gearbox. The eD-QDrive is easily mounted via the easy mounting system and installed via 1x High-voltage plug, 1x 24V In, 1x 24V Out & 2x CAN ports. The 24V out port can be used to connect to a flap or foil actuator. This actuator can be controlled via an Interface or automatically by the AI PC, accounting for pitch, roll, and weight&balance. The automatic control profile can be adjusted to ensure range, comfort, or performance.

ONE TO CONTROL IT ALL



One to control it ALL

The AI Box is the heart and brain of the entire technology stack. The AI Box manages the operation of the vessel, including the propulsion system (Inverter, Motor, Rudder, Foils/Trim Tabs), cooling systems (eD-QDrive & Battery), and charging (up to 150kW). The AI Box also manages the domestic operation of a vessel, including domestic switching (all 24V systems can be controlled), and resource management (High-Voltage Battery, Domestic Battery, Solar Power, Shore Power & Fresh Water). This holistic and complete vessel management enables the most efficient use of resources on board while being as convenient. One AI Box means one interface; this means convenience and simplicity for the owner or crew, as well as accessible and reduced maintenance through predictive maintenance.

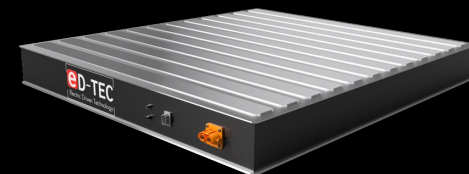
TAILOR MADE USER INTERFACE



Tailor made user interface

The AI Box can manage all the vessels components ranging from trim tabs, rudders, and throttle (fly-by-wire), Autopilot, High Voltage & Domestic Battery, Charging and HPC, Resource management as well and Domestic Switching. These functions must be usable and convenient while conforming to DNV requirements. To fulfill the high standards eD-TEC holds itself to, it is necessary to develop a dedicated user interface to perfectly accommodate the functionalities offered by the system. The system ensures maximum efficiency, comfort, and performance while convenient usability.

ED-HV BATTERY: 80-320 KWH



eD-HV Battery: 80-320kWh

A vital component of the eD-Technology Stack 360° is the high-voltage Battery. It is critical to the system and must be able to deliver high amounts of power, thus requiring a battery setup with a high C-Rate. Optimized thermal management accompanies the battery pack; this prevents the derating of the Battery, allowing for longer and higher peak power settings. Weight performance is critical as well; the eD-HV Battery will be able to offer a very competitive power-to-weight ratio, unlike any other product.

The eD-HV Battery will be available soon, it integrates seamlessly into the eD-Technology Stack 360° and is scalable from 80kWh-320kWh.

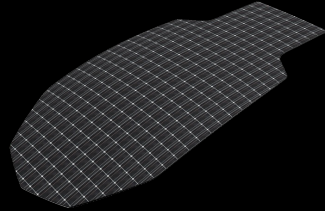
FLAPS/FOILS



Handling & efficiency

Flaps or foils support handling of vessel through inducing role and pitch. Increasing driving experience and efficiency.

SOLAR



Harness the sun power

The seamless integration of solar cells in the eD-Platform offers redundancy and greater independence.

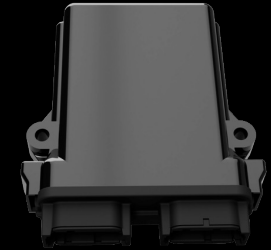
RANGE EXTENDER



Increase range & performance

Most efficient way to use fuel on a vessel. Increase endurance and performance with a GenSet.

DIGITAL SWITCHING & MONITORING



Control at your fingertips

Switch lights and have a look on all tanks and systems conveniently integrated in one user interface.

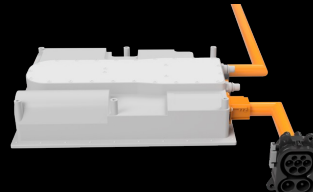
MFD & AUTOPILOT



System integration

Staying true to end-to-end integration - MFD and autopilot integration in the eD-TEC Technology stack.

DC FAST CHARGING & V2V



Fast & convenient charging

DC fast charging allows charging powers up to 300kW. V2V charging will allow the operator to charge Vessel with vehicles or vice versa.

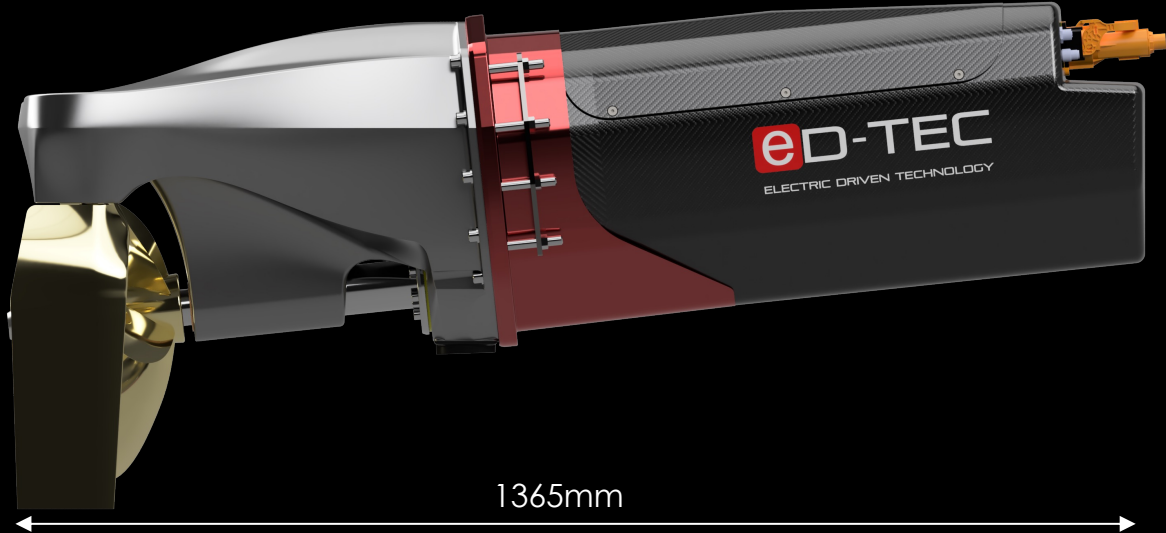
OTA & CONNECTIVITY



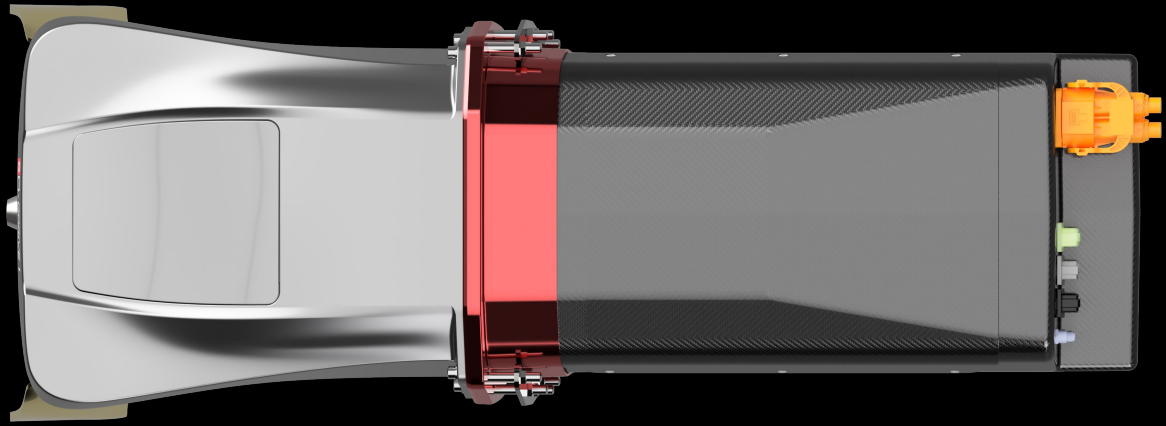
Always up to date

OTA updates allows for constant development of the operating software while connectivity provides the user with the latest data and info.

eD-QDrive	eD-Q1 (6-10m; Prop 16-18'')		eD-Q2 (10-16m; Prop 21-24'')		eD-Q3 (16-30m; Prop 25-32'')	
	100 kWc	200 kWc	200 kWc	380 kWc	400 kWc	600 kWc
AI Box	Backbone Computer, Cloud capable, Update over the Air capable, SW Basis					
Energy Pack	Performance Battery, DC-Link, Thermal management-SET		33 kWh N x parallel	98 kWh N x parallel	80 kWh N x parallel	
Charging Pack	DC/DC Converter 2,7kW, Onboard Charger:	22 kW AC	22 kW AC/ 150 kW DC	22 kW AC/ 300 kW DC	V2V SET	
E3-Architecture & SW	Safety PLC, steering & throttle by wire, Electronic MOB kill switch, AI Box	PFD 16" Touch	PFD & MFD 16" Touch	2. PFD 16" Touch	AP, Wind, VHF, Echo	
Gen Set	195 kWc, 445 kg, EU-Directive 2013/53/EU (RCD) EPA Marine Tier 3, BSO2					
Solar	Solar Panel Set, Control, DC/DC, SW	700 Wp	2,5 kWp	2-30 kWp	Add DC/DC Set	
Domestic	Individual/Boat	Light	Sound	220 Volt	Cooling / Heating	



860mm



504mm

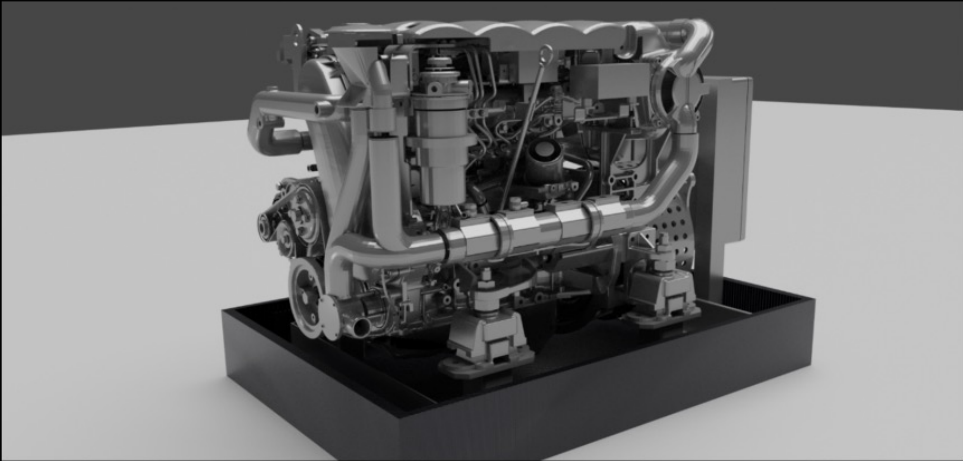
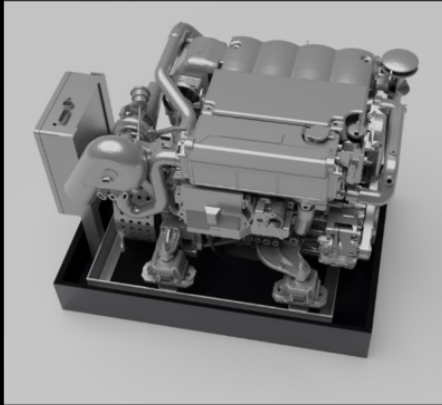
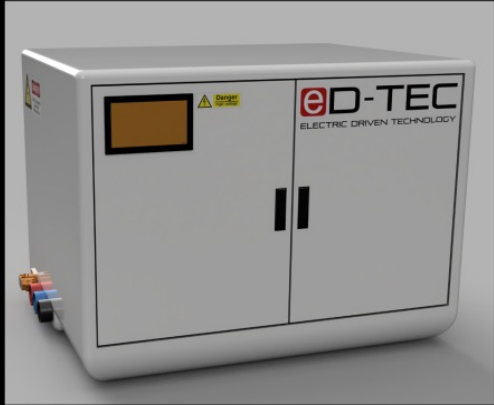


Electrical	Peak power	200kW
	Continuous power	100kW
	Voltage max.	750Vdc
	Voltage min.	500Vdc
	Low voltage supply	24Vdc
	Communication	CAN/J1939
Properties	Propeller size	16-18"
	Transom angle	6°
	Weight	<100kg
	Cooling	Dual circuit

Coming soon

	33 PRIS	98 CYL	80 eD-HV
Energy (nom)	33 kWh	98 kWh	80 kWh
Discharge power continuous	50 kW	100 kW	600kW
Charge power continuous	45 kW	80 kW	80-120kW
Cycle life	1700 cycles	2000 cycles	2000 cycles
Dimension (L x W x H) in mm	1700 x 700 x 150	1720 x 700 x 300	1500 x 1600 x 200
Weight in kg	275 kg	600 kg	<450 kg

We are currently offering different types of battery packs. Each have their own advantages. Each pack can be used in parallel within one system



Motor type	T4.270
Power	195 kWc bei 3.600 U/min, 54 l/h
Weight	445 kg, Package:
Rating	M6
Cylinder	4 (in Row)
Displacement	2.982 Liter
Cooling System	Dual circuit, with seawater glycol heat exchanger
Emissions	EU-directive 2013/53/EU (RCD) EPA Marine Tier 3, BSO2
Price	future@ed.tec.de

EXAMPLE FOR COMPLETE DRIVETRAIN WEIGHT WITH 99KWH AND 196KWH

Component

Weight [kg] 99kWh

Weight [kg] 196kWh

Charging Pack &
Energy Pack

50

50

E3-Architecture

60

60

2 x eD-QDrive 1-
100

200

200

3 x Battery 33 PRIS
(99kWh total)

825

2 x Battery 98 CYL
(196kWh total)

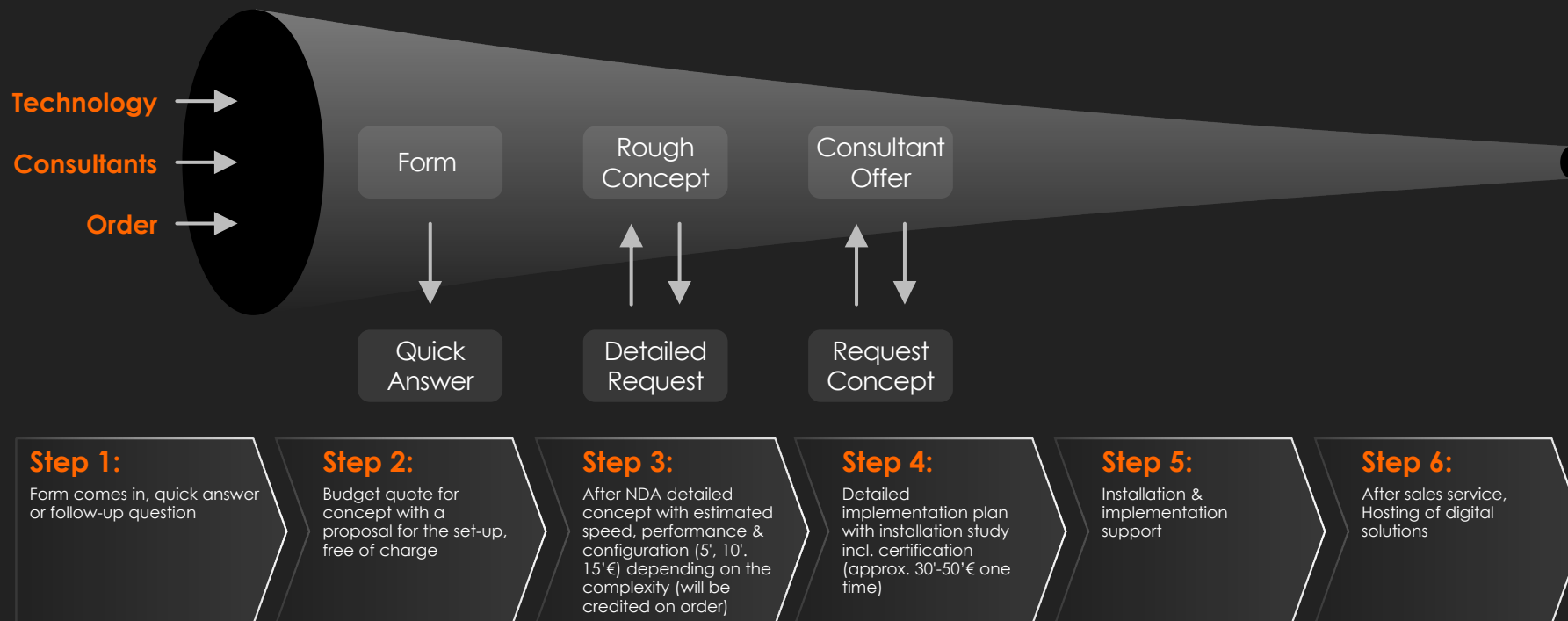
1200

Total

1135

1510

HAVE NOT SENT AN ENQUIRY YET?
TELL US SOME SPECIFICATIONS OF YOUR PLANNED BOAT AND
WE CAN PLAN THE BEST SYSTEM FOR YOU.



eD-TEC is currently a small Startup-Team and focusing of maximum efficiency of resources, thus we put a process in place for everyone to explain how we manage our inquiries and the expenses that will follow for certain steps. This is best seen as a funnel and helps to narrow down the possible solution for each individual customer.

